

suiting them to the reserve. Trees even up to 15ft. or 20ft. in height can be safely transplanted.

**Catering for Numerous Sports.**

Around the base of the slopes a drive is being constructed to lead from Asquith Avenue to Malvern Road. A natural depression adjacent will become an ornamental lake and some small springs will supply water for a series of lily ponds further along the drive. An extensive plateau some 20ft. higher than the area intended for playing fields will be laid down in lawns, and in the centre will be constructed a type of semi-circular rotunda, similar to the stages of open-air theatres in America. This will be used as a bandstand, and in front of it an open space of lawns will be left for a natural auditorium.

The bank leading down from this plateau to the football fields will be terraced and made into an open-air grandstand. The two football and cricket fields are now almost completed and the grass is coming away well. Nearer Asquith Avenue two bowling greens and a hockey field are to be laid down.

On the Malvern Road side of the football fields a delightful playground for children has been completed and on a plateau overlooking it two tennis courts and two croquet greens, the first work begun, have been played on since Christmas. Provision has been made for five more tennis courts adjacent to the band rotunda.

Similar comprehensive plans have been adopted for the three other reserves in Mount Albert, which, after lying waste as "commons" for years, are now providing employment for dozens of men as unemployment relief works.

**Other Reserves in the Borough.**

**CROQUET.**

**MOUNT ALBERT DOMAIN BOARD.  
CROQUET LAWNS. MORNINGSIDE RESERVE.**

Tenders from Clubs and Persons interested are invited by the Board for the use of the Croquet Lawns in the Morningside Reserve for a period of One Year. Particulars may be obtained on application to the Resident Engineer, Council Chambers, Mount Albert. Tenders close at Noon of TUESDAY, 25th Inst., and are to be sealed and endorsed "Tender."

F. W. PARKINSON,  
Hon. Secretary.

Morningside, August 14, 1931.

The newly formed croquet club at Morningside, to be known as the Malvern Croquet Club, held its first meeting on Saturday. There was a good attendance of members. The following officers





This map/plan is illustrative only and all information should be independently verified on site before taking any action. Copyright Auckland Council. Boundary information from LINZ (Crown Copyright Reserved). Whilst due care has been taken, Auckland Council gives no warranty as to the accuracy and completeness of any information on this map/plan and accepts no liability for any error, omission or use of the information. Height datum: Auckland 1946.

### Fowlds Park 1940

*Malvern CE next to tennis courts*

Created: Sunday, 21 September 2014, 2:59:29 p.m.



**Auckland Council**  
Te Kaunihera o Tamaki Makaurau

Scale @ A4 1:1000



## PAPERSPAST

[Papers Past Home](#)   [Introduction](#)   [Search](#)   [Browse](#)

[Papers Past](#) > [Auckland Star](#) > [24 October 1932](#) > [Page 9](#) > [MALVERN CLUB.](#)

## MALVERN CLUB.

Auckland Star, Volume LXIII, Issue 252, 24 October 1932, Page 9

[About this newspaper](#)

[View computer-generated text](#)

[List of search results](#)

## MALVERN CLUB.

The newly-formed Malvern Croquet Club, Mount Albert, held the opening on Saturday afternoon. A large number of members and visitors attended, including the presidents and secretaries of the sister clubs of Auckland and province. The lawns were opened by Mr. Floyd, chairman of the parks committee, on behalf of the Mayor of Mount Albert, Mr. W. F. Stilwell, who was unable to be present, and Mr. Congalton, the town clerk, also welcomed the guests. The president and secretary of the Auckland Croquet Association, Mrs. R. J. Hamilton and Mrs. A. H. Keesing, congratulated the club on their beautifully-formed lawns, and wished the club a successful season. The president, Mrs. F. Preston, who wore a green marocain and green hat, played the first ball, and the secretary, Mrs. J. Harris, wore a figured brown crepe de chine and brown hat. A marquee was arranged for afternoon tea, and was decorated in the club's colours, brown and gold, streamers forming a canopy from the centre of the tent. Wallflowers and golden Iceland poppies were used in profusion for the tables.

location variously described as Morningside, Western Springs.

1932 Morningside

July 2013 Auckland CC archives - unable to locate

Jan 2014 Auk Star  
21 Oct 1932


"next to tennis courts, Malvern Rd., Morningside

(Morningside Reserve now known as Fowlds Park)

This article has been automatically clipped from the Auckland Star, organised into a single column, then optimised for display on computer screen. As a result, it may not look exactly as it did on the original page. The article can be seen in its original form in [page view](#).

This newspaper was digitised in partnership with Auckland Libraries.

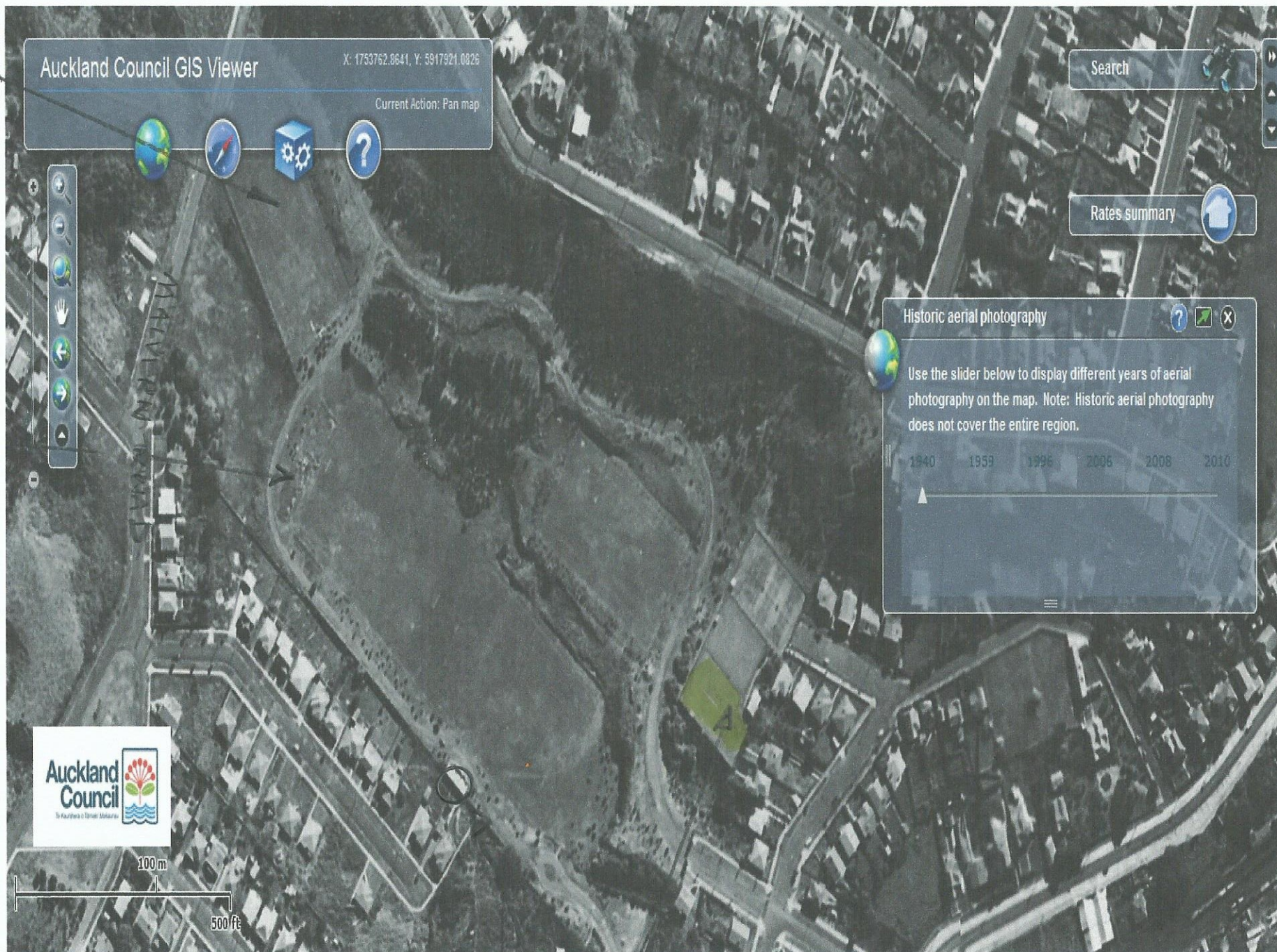
Te Puna Mātauranga o Aotearoa

 NATIONAL LIBRARY  
OF NEW ZEALAND

[About this site](#) | [Site map](#) | [Accessibility](#) | [Contact us](#) | [Terms of use](#) | [Copyright guide](#)

[newzealand.govt.nz](http://newzealand.govt.nz)





Ferris Courts  
 Childrens Playground?

Ferris Park 1940

Possibly Malvern CC clubhouse  
<http://maps.aucklandcouncil.govt.nz/aucklandcouncilviewer/>

Rocky Nook CC



Malvern C.C. / Apparent area tennis courts

Playground 2000's



Site of Rocky Nook C.C.

Google earth

feet  
meters





2014 Probable site of the Malvern  
Croquet Club in the Morningside  
Reserve - now Fowlds Park

