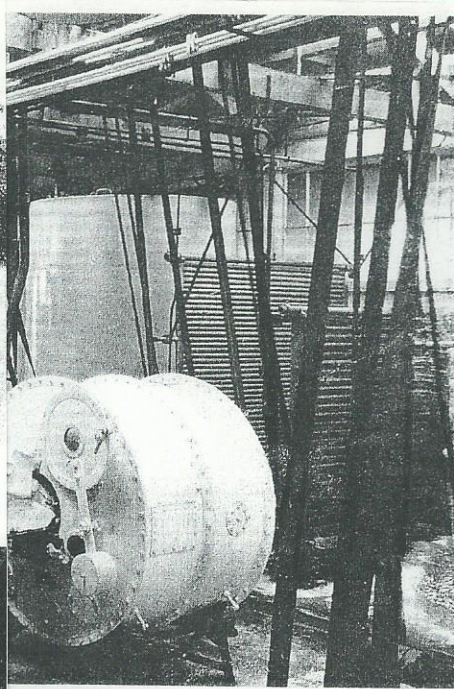


Opening day of the East Tamaki Croquet Club pavilion.
(Courtesy of Alice Prangley)



Mary Hill, Essie Hill, Marj Wolfenden, Alice Prangley.
(Courtesy of Bert Wolfenden)



Papatoetoe Dairy Company Ltd. in the 1940s. The
of Papatoetoe Historical Society)

EAST TAMAKI CROQUET CLUB

Chapel Rd

After the World War II, Alice Prangley and Millie Ross (nee Swaffield) proposed the formation of a croquet club. The women of the district worked hard to raise funds by card evenings and cake stalls. In 1946 the club's pavilion was opened by Sir Leon Gotz the local Member of Parliament. The first President of the club was Millie Ross, followed by Alice Prangley. Some of the first players were Phyllis Cosson, Mina Elmbranch, Dora Guy, Essie Hill, Mary Hill, Dolly Thorburn and Marj Wolfenden. After a number of successful years, the club lost support, and closed in 1963.

rebuilt.

The suppliers were originally from East Tamaki, Clevedon, Papatoetoe, Otahuhu, Mangere, Waiau Pa and Patumahoe. Over time the factory's catchment also took in Drury, Ramarama, Ararimu, Paparimu and Hunua. For some years all carrying apart from milk and cream was undertaken by Percy Pennell of Papatoetoe. He used to drive a 'Diamond T' truck, the latest thing in the 1930s.

Just before World War II a vacuum churn was installed in the factory. This produced more compact butter. The new product was covered in special wrappers. In 1946 the company registered a new brand for all its products, 'Tamco'. In 1949 a new factory was opened in Takanini where production of dried skim milk began. Casein was also manufactured there. In 1954 the whole operation of the East Tamaki Co-Operative Dairy Company was moved to Takanini, with the original factory being closed, and eventually sold in 1957.



Alice Prangley and Millie Ross at the opening
day of the East Tamaki Croquet Club pavilion.
(Courtesy of Alice Prangley)

EAST TAMAKI WOMEN'S BOWLING CLUB

In 1956 the East Tamaki Women Bowling Club started. The club use the croquet club pavilion as the club rooms. This club also went into recess in 1998, with the remaining players joining the East Tamaki Men's Bowling Club.

EAST TAMAKI RUGBY FOOTBALL CLUB

The club first started in 1946. It had its origin at a dance when Tom Preston from East Tamaki challenged Selwyn Waring from Howick to a rugby match. The East Tamaki Rugby Football Club then evolved from that challenge to become a part of the Howick Sub-union. The players in the first game were all locals, some of whom had previously played for the Otahuhu Club. They were: Jack Allen, Laurie Belsham, George Biddick, Dudley Brown, Murray Evestaff, Owen Findlay, Harry Ferguson, Keith Ferguson, Arthur Finlayson, Russell Fraser, Bevan Hough, Doug McGregor, Roy Peglar, Dave Rick, Harry Roxborough, Westy Thomas, Bruce Thompson, Evie Thorburn, Eric and Jim Wright.

These were country boys out for fun. They had skilled players among them, however, including Noel Edwards and Harry Ferguson. The referee was Bert Thompson. Some of the first officials of the club were Herbie Ferguson, Bob Biddick, Lou Bourke, Ken Ferguson and Roy Turton. Two of the locals, Jack Valde and Bert Wolfenden, became referees in the sub-union.

The club also had its own 'Zambuck' in Percy Roberts, who attended every game. The other teams in the sub-union were Bucklands Beach, Howick, Whitford, Brookby and the Otahuhu Sub-station. The football field on the domain was developed with volunteer labour, with one of the leaders in its development being Herbie Ferguson.

The club went into recess after the 1955 season due to lack of players. Farm labourers were not needed so much on farms in the area due to



East Tāmaki War Memorial park



In 1949 the East Tāmaki war memorial committee made ambitious plans to further develop the recreation ground as a Second World War memorial. Proposals included extending the playing fields, opening a memorial gateway and garden of remembrance, and building a new public hall and new sports pavilions. The playing fields were enlarged by stages, a bowling pavilion was opened in 1953, a croquet pavilion was opened in 1955, and memorial gates were completed in September 1955.

The memorial gates are situated just around the corner from the First World War memorial. They incorporate the East Tamaki Second World War roll of honour listing the names of 35 servicemen,

[21 of 35]

July 1946

About this time, the East Tamaki Croquet Club is formed. The East Tamaki Men's Bowling Club is formed two years later, and establishes its own green next to the croquet club. The East Tamaki Women's Bowling Club is also formed in October 1956. (The croquet club goes into recess in 1963, the women's bowling club likewise in 1997.)

[Further information...](#)