

TRANSPORT OPENING ENJOYABLE FUNCTION. MAPLE LEAF VISITORS. DOMINION TOUR LATER.

(By TRUNDLER.)

Appropriate and interesting originality was the keynote of the enjoyable function arranged by the Auckland Transport Bowling Club last Saturday to celebrate the official opening of the newly-constructed green. It was a stroke of genius to stage what Mr. Ford called a "one-bowl tournament" to commence the actual play, for the excitement of over 100 players circling the green, each at a given signal, delivering one bowl to the jack thrown by the wife of the secretary, and then finding that somebody had run the jack several yards away from its original position, was sufficiently diverting to create the desirable atmosphere after the necessarily formal proceedings in connection with welcoming the visitors.

The whole afternoon reflected great credit on the efficient organisation, most appropriate after all had seen or played on the beautiful green which has taken the place of what was formerly a rubbish dump, and warm congratulations were extended to those concerned. The Transport Club has obviously entered upon a new era of useful and enjoyable service and recreation.

BOWLING.

Auckland Star, Volume LXIX, Issue 7, 10 January 1938, Page 14

About this newspaper View computer-generated text

TRANSPORT'S NEW GREEN OPENED

The new green of the Auckland Transport Bowling Club at Mount Roskill was opened on Saturday before a large attendance. Mr. A. E. Ford, the patron, welcomed the visitors and paid tribute to those who had made the green an accomplished fact.

A one-bowl contest was won by H. Simmonds, of the Transport Club, and on a draw after the third round the tournament was won by Parkin, Barlow, Turnbull, Sheriff.

Papers Past > Auckland Star > 3 March 1943 > Page 4 > BOWLER'S COLLAPSE

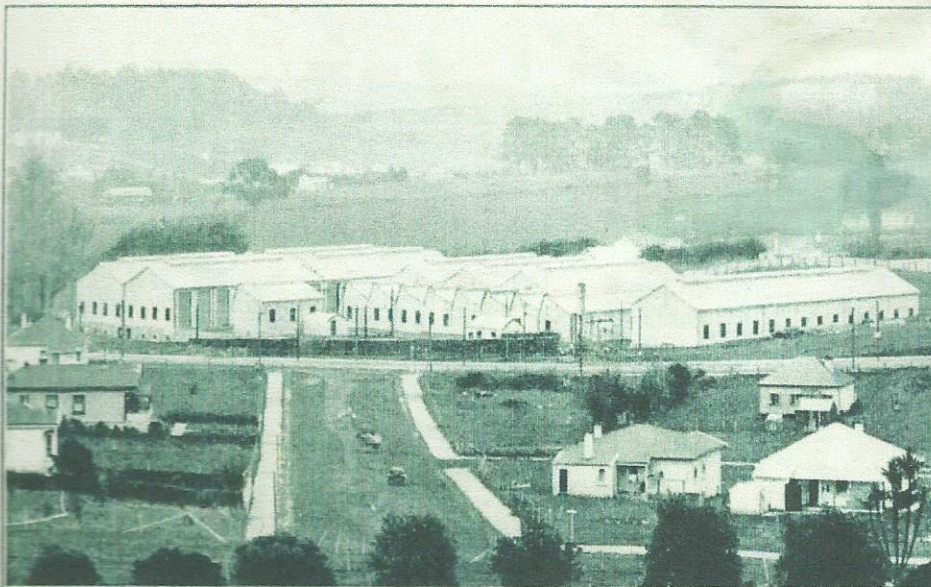
BOWLER'S COLLAPSE

Auckland Star, Volume LXXIV, Issue 52, 3 March 1943, Page 4

About this newspaper View computer-generated text

BOWLER'S COLLAPSE

A retired seaman, Captain J. W. H. Holmes, of Kitenui Avenue, Mount Albert, collapsed and died at the Auckland Transport Bowling Green, Manukau Road, Epsom, about 1.45 this afternoon. Captain Holmes, who had not been feeling well during the morning, had had no luncheon, and immediately after he had played a game he went behind the pavilion, where he collapsed and died almost immediately.



TRAMWAY WORKSHOPS.

Timespanner

Like This Page · September 5 · Edited ·

The Auckland Tram workshops on Manukau Road, Royal Oak. All gone now, and the area just residences at Goodland Street and Goldstine Place. We need an interpretive panel put there ...

These images from the Auckland City Municipal Handbook, 1922.

The Department's workshops, which were completed in 1912, are situated in Manukau Road, Royal Oak, and cover an area of two acres in a property six acre... See More

Like Comment Share

Write a comment...

Lewin Rd foreground

Like

Like

PAPERSPAST

[Papers Past Home](#) [Introduction](#) [Search](#) [Browse](#)

[Papers Past > Auckland Star > 15 November 1938 > Page 17 > BOWLING.](#)

BOWLING.

Auckland Star, Volume LXIX, Issue 270, 15 November 1938, Page 17

[About this newspaper](#)

[View computer-generated text](#)

BOWLING. MORE CLUB OPENINGS. HOWICK AND TRANSPORT ROTORUA TOURNAMENT FILLED.

(By TRUNDLER.)

Perfect weather conditions enabled bowlers to get on with their club competitions last Saturday, as there is now plenty of time to play singles or pairs after the rink games. Beyond a few inter-club meetings, the only gatherings of general interest were the official openings at Howick and Auckland Transport, although the latter had informally commenced play on the old green six weeks previously.

The new green was a picture, and the Hon. H. G. R. Mason, chairman of the Auckland Transport Board, commended the club for making a beauty spot out of what was formerly a rubbish dump.

Mr. O. Jensen, chairman of the committee, welcomed the gathering on behalf of the club president, Mr. E. B. Foster, making special mention of Messrs A. E. Whitten and I. J. Sutherland, members of the Auckland Centre executive, and the presence of representatives from Auckland, Buckland's Beach, Carlton, Edendale, Grey Lynn, Ellerslie, Mount Albert, Onehunga, Rocky Nook, Waitemata, West End, Whangarei, Te Awamutu and Wellington. He thanked the Transport Board for their practical interest in the club.

The club patron, Mr. A. E. Ford, also thanked the board and expressed appreciation of the support received from other clubs. He was particularly pleased to welcome Judge Alex Thomson, a former president of the Mosman Club, Sydney, who will be in Auckland until after Christmas, when he leaves to spend a few weeks in Wellington.

Mr. Whitten, past president of the Auckland Centre, and a member of the New Zealand Council, apologised for the absence of the president of the Centre, Mr. W. J. Truscott, and the other members of the executive, who were engaged at the Howick opening and at the Ladies' Day at Waitemata. He informed the gathering that the International Bowling Board had invited a touring team to visit the Old Country next year, and that the Taranaki Centre had invited a party to visit their district during March.

The Croquet Club attached to the bowling was then officially opened, and good wishes for a successful season were conveyed by Mrs. Webber, president of the Auckland Croquet Association.

Visiting bowlers at present in Auckland include Mr. White, Rose Bay Club, Sydney, and Mr. Russell, Hongkong Club. Auckland bowlers have also been pleased to welcome back from Hongkong Mr. W. Marshall, who has rejoined the Mount Eden Club.

Entries Exceed Limit.

FRIENDLY SOCIETIES (New Zealand Herald, 1937-10-11)

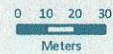
The Auckland Transport Club is looking forward to a very successful summer sporting season. The club runs its own bowling and tennis sections. The bowling club has its headquarters at the Manukau Road workshops and a large company of players and friends assembled to witness the opening of the green for the new season. The Hon. H. G. R. Mason, chairman of the Auckland Transport Board, in the course of his remarks, said the board was always willing to encourage healthy recreation among its employees. Messrs. Neagle, Lark and McClintock, members of the board, also spoke. Mr. Indore, a member of the Auckland Bowling Centre Executive, congratulated the club upon its success during its first season, and wished it an even more prosperous time this year. Mr. A. E. Ford, the manager of the tramways, and Mr. Eglinton, president of the Auckland Transport Club, also spoke. Mrs. Mason then threw up the first jack and Mrs. S. M. Farrelley played the first bowl, both ladies receiving bouquets. Afternoon tea was served and several good games played. The season promises to be an exceptionally good one, 28 new members already having been received, and the full quota of 120 players is already in sight. A large silver cup, to be known as the Jim Kennedy Memorial Trophy, has been presented by the general committee for the championship cup singles

playing at present on its old green of five rinks, but in January a new green of eight rinks each way is to be opened in front of the workshops, where a waste piece of land has been transformed. A croquet lawn for the ladies is also to be constructed. A fine new pavilion capable of accommodating 160, with a rotunda attached, which will hold another 100, will also be opened. The pavilion has 120 lockers and a well-equipped kitchen. It has been built by the board's employees chiefly from waste material, and is a monument to the enterprise of the club. A rose garden adjoins the green, which promises to be one of the most attractive in the district. The tennis section has its courts at the Gaunt Street depot.



DISCLAIMER:
 This map/plan is illustrative only and all information should be independently verified on site before taking any action.
 Copyright Auckland Council. Land Parcel Boundary information from LINZ (Crown Copyright Reserved). Whilst due care has been taken, Auckland Council gives no warranty as to the accuracy and plan completeness of any information on this map/plan and accepts no liability for any error, omission or use of the information. Height datum: Auckland 1946.

Auckland Transport CC 1940



Scale @ A4
 = 1:2,500

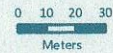
Date Printed:
 26/12/2016





DISCLAIMER:
This map/plan is illustrative only and all information should be independently verified on site before taking any action.
Copyright Auckland Council. Land Parcel Boundary information from LINZ (Crown Copyright Reserved). Whilst due care has been taken, Auckland Council gives no warranty as to the accuracy and plan completeness of any information on this map/plan and accepts no liability for any error, omission or use of the information. Height datum: Auckland 1946.

Auckland Transport CC 2012



Scale @ A4
= 1:2,500

Date Printed:
26/12/2016

